

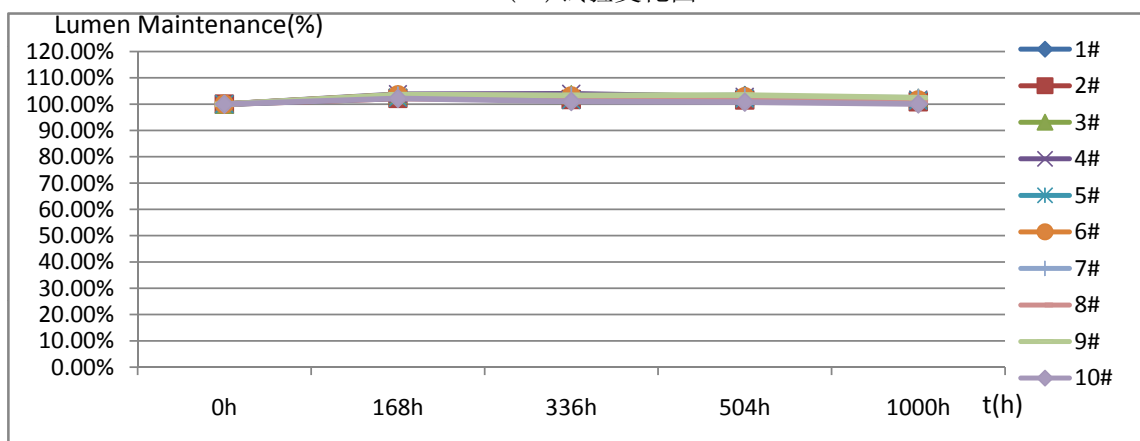
检测报告(内部)

报告编号: LAB0204246-02

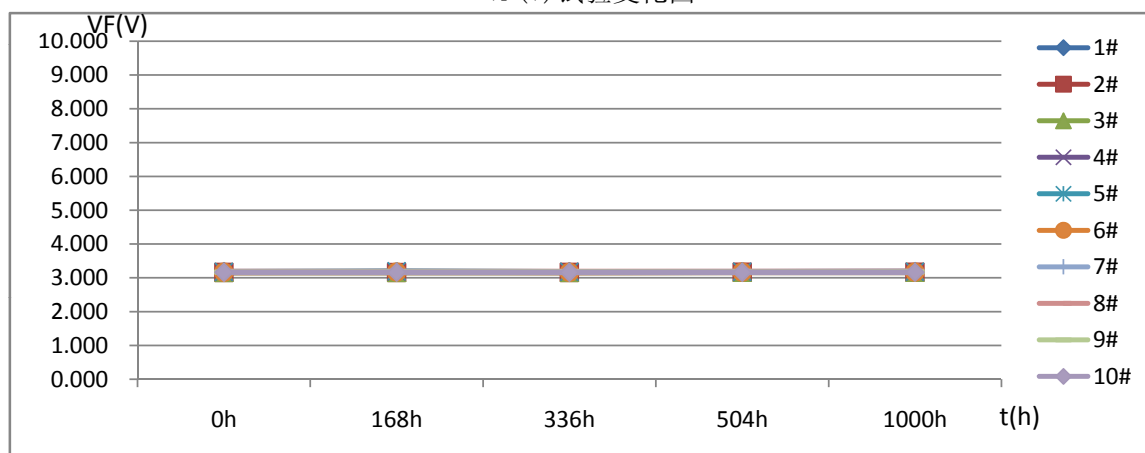
第 1 页共 4 页

1. 客户名称: 深圳瑞丰_通用封装事业部_照明事业部_产品技术一部_中小功率产品组/曹昌鹏
2. 样品编号: 1#~10#
3. 产品规格/型号: RF-P65MI32DS-AF-N-Y/SC17-200407066
4. 检测时间: 2020. 04. 30~2020. 06. 11
5. 检测设备: LED-专用精密光电烤箱 (SZ12111738); LED阵列快速测试系统 (G118471CA833115);
 FLUKE万用表 (34700492WS); 回流焊机 (NO842010); 电热鼓风干燥箱 (TST1005028)
 显微镜 (MT 4X); DC POWER SUPPLY (020178731); DSX500光学电子显微镜 (4B43960)
6. 环境条件: (22~28) °C, (30~70) %RH
7. 检测依据标准: 电工电子产品环境试验 第2部分: 试验方法 试验B: 高温 GB/T 2423.2-2008,
 LED的测量 CIE127: 2007
8. 检测项目: 高温老化试验
9. 检测条件: 预处理: 125°C烘烤2H, 回流焊1次 (参照SMT回流焊说明WI-R00-004文件)
 85°C, 老化时间1000H, 老化电流60mA, 测试电流60mA,
 积分球2 π 测试, 测试点: 0h, 168h, 336h, 504h, 1000h

Φ (lm) 试验变化图



V_F (V) 试验变化图



检测: 黄凯 2020.06.11

审核: 张水城 2020.06.15

批准: 张利辉 2020.06.20

检测报告(内部)

报告编号: LAB0204246-02

第 3 页共 4 页

序号	Φ (1m)					Lumen Maintenance (%)				
	0h	168h	336h	504h	1000h	0h	168h	336h	504h	1000h
1#	23.79	24.53	24.52	24.57	24.16	100.00%	103.11%	103.07%	103.28%	101.56%
2#	24.94	25.49	25.38	25.33	25.17	100.00%	102.21%	101.76%	101.56%	100.92%
3#	24.65	25.54	25.53	25.40	25.21	100.00%	103.61%	103.57%	103.04%	102.27%
4#	22.88	23.74	23.79	23.50	23.29	100.00%	103.76%	103.98%	102.71%	101.79%
5#	23.71	24.28	24.09	24.22	24.02	100.00%	102.40%	101.60%	102.15%	101.31%
6#	25.28	26.17	26.06	25.98	25.70	100.00%	103.52%	103.09%	102.77%	101.66%
7#	24.91	25.75	25.71	25.60	25.52	100.00%	103.37%	103.21%	102.77%	102.45%
8#	23.87	24.58	24.47	24.19	24.09	100.00%	102.97%	102.51%	101.34%	100.92%
9#	23.23	24.08	24.00	24.04	23.81	100.00%	103.66%	103.31%	103.49%	102.50%
10#	24.91	25.45	25.16	25.11	24.93	100.00%	102.17%	101.00%	100.80%	100.08%
Max	25.28	26.17	26.06	25.98	25.70	100.00%	103.76%	103.98%	103.49%	102.50%
Min	22.88	23.74	23.79	23.50	23.29	100.00%	102.17%	101.00%	100.80%	100.08%
Avg	24.22	24.96	24.87	24.79	24.59	100.00%	103.08%	102.71%	102.39%	101.55%

序号	VF (V)					ΔVF (V)			
	0h	168h	336h	504h	1000h	168h	336h	504h	1000h
1#	3.181	3.179	3.177	3.178	3.182	-0.002	-0.004	-0.003	0.001
2#	3.159	3.160	3.159	3.161	3.164	0.001	0.000	0.002	0.005
3#	3.159	3.159	3.159	3.161	3.164	0.000	0.000	0.002	0.005
4#	3.169	3.182	3.171	3.171	3.174	0.013	0.002	0.002	0.005
5#	3.176	3.197	3.178	3.177	3.181	0.021	0.002	0.001	0.005
6#	3.161	3.174	3.165	3.166	3.169	0.013	0.004	0.005	0.008
7#	3.178	3.183	3.179	3.182	3.185	0.005	0.001	0.004	0.007
8#	3.186	3.188	3.186	3.187	3.189	0.002	0.000	0.001	0.003
9#	3.167	3.173	3.171	3.169	3.171	0.006	0.004	0.002	0.004
10#	3.161	3.165	3.164	3.162	3.165	0.004	0.003	0.001	0.004

序号	IF (mA)				
	0h	168h	336h	504h	1000h
1#	60.00	59.98	59.98	59.98	59.98
2#	59.98	60.00	59.98	59.98	60.00
3#	60.00	60.00	59.98	59.98	60.00
4#	60.00	60.00	59.98	60.00	60.00
5#	60.00	60.00	59.98	59.98	60.00
6#	60.00	60.00	59.98	60.00	60.00
7#	60.00	60.00	59.98	59.98	60.00
8#	59.98	60.00	59.98	59.98	59.98
9#	59.98	60.00	59.98	60.00	60.00
10#	60.00	60.00	59.98	60.00	60.00

检测报告(内部)

报告编号: LAB0204246-02

第 4 页共 4 页

序号	x					△x			
	0h	168h	336h	504h	1000h	168h	336h	504h	1000h
1#	0.3110	0.3112	0.3117	0.3122	0.3112	0.0002	0.0007	0.0012	0.0002
2#	0.3075	0.3079	0.3086	0.3087	0.3078	0.0004	0.0011	0.0012	0.0003
3#	0.3070	0.3083	0.3081	0.3083	0.3074	0.0013	0.0011	0.0013	0.0004
4#	0.3067	0.3079	0.3078	0.3080	0.3068	0.0012	0.0011	0.0013	0.0001
5#	0.3093	0.3097	0.3103	0.3104	0.3096	0.0004	0.0010	0.0011	0.0003
6#	0.3079	0.3084	0.3089	0.3088	0.3079	0.0005	0.0010	0.0009	0.0000
7#	0.3084	0.3089	0.3093	0.3094	0.3086	0.0005	0.0009	0.0010	0.0002
8#	0.3123	0.3126	0.3125	0.3126	0.3115	0.0003	0.0002	0.0003	-0.0008
9#	0.3056	0.3061	0.3061	0.3061	0.3053	0.0005	0.0005	0.0005	-0.0003
10#	0.3070	0.3073	0.3071	0.3072	0.3063	0.0003	0.0001	0.0002	-0.0007

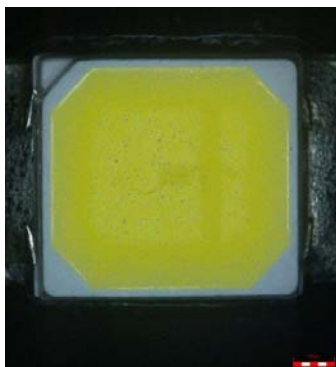
序号	y					△y			
	0h	168h	336h	504h	1000h	168h	336h	504h	1000h
1#	0.3360	0.3385	0.3394	0.3403	0.3389	0.0025	0.0034	0.0043	0.0029
2#	0.3288	0.3313	0.3326	0.3328	0.3317	0.0025	0.0038	0.0040	0.0029
3#	0.3277	0.3323	0.3322	0.3323	0.3311	0.0046	0.0045	0.0046	0.0034
4#	0.3243	0.3290	0.3288	0.3288	0.3271	0.0047	0.0045	0.0045	0.0028
5#	0.3333	0.3360	0.3371	0.3373	0.3363	0.0027	0.0038	0.0040	0.0030
6#	0.3308	0.3340	0.3346	0.3347	0.3333	0.0032	0.0038	0.0039	0.0025
7#	0.3336	0.3366	0.3374	0.3375	0.3365	0.0030	0.0038	0.0039	0.0029
8#	0.3375	0.3402	0.3397	0.3397	0.3382	0.0027	0.0022	0.0022	0.0007
9#	0.3232	0.3263	0.3263	0.3263	0.3254	0.0031	0.0031	0.0031	0.0022
10#	0.3239	0.3263	0.3255	0.3256	0.3243	0.0024	0.0016	0.0017	0.0004

单颗LED判定基准:

项目	min	max
Lumen Maintenance (%)	90%	110%
△VF	-0.5	0.5
△x	-0.01	0.01
△y	-0.015	0.015
外观无胶裂, 变黄, 发黑等现象		

经过1000h高温老化试验, 全部样品各项参数均在判定标准范围内。

外观描述: 全部样品外观正常



试验结果: 合格

备注: 检测结果只对本次样品负责。

.....结束.....