

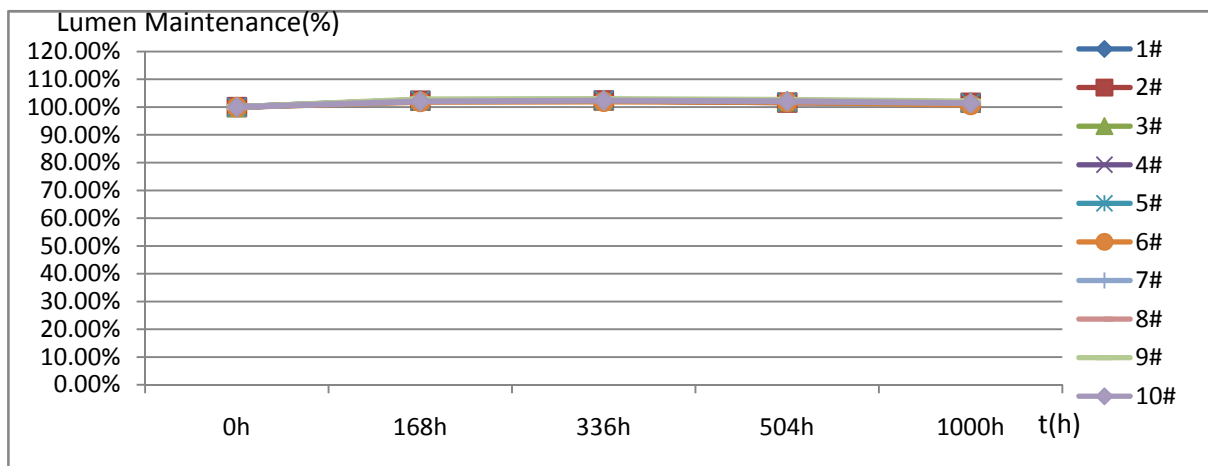
检测报告(内部)

报告编号: LAB0203007-19

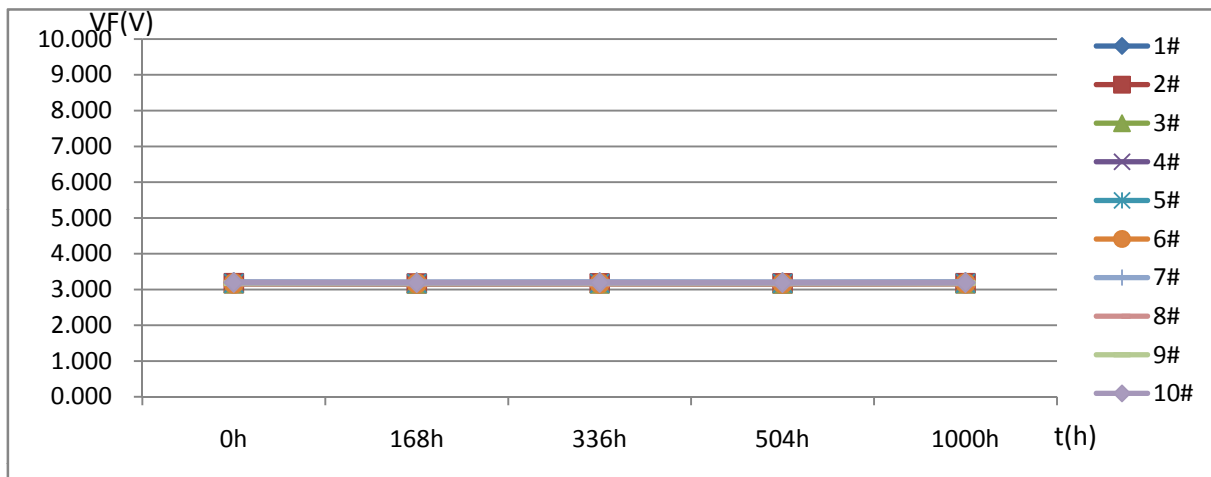
第 1 页共 5 页

1. 客户名称: 中小功率及EMC产品部/李祖俊
2. 样品编号: 1#~10#
3. 产品规格/型号: RF-WMHI32DS-FF-J/SC17-200104010
4. 检测时间: 2020. 03. 05~2020. 04. 16
5. 检测设备: LED-专用精密光电烤箱(SZ12112454); HAAS-1200快速光谱辐射计(G113724CS1321116); FLUKE万用表(34700492WS); 回流焊机(N0842010); 电热鼓风干燥箱(TST1005028) 显微镜(MT 4X); DC POWER SUPPLY (020178731); DSX500光学电子显微镜(4B43960)
6. 环境条件: (22~28) °C, (30~70) %RH
7. 检测依据标准: 电工电子产品环境试验 第2部分: 试验方法 试验B: 高温 GB/T 2423.2-2008, LED的测量 CIE127: 2007
8. 检测项目: 高温老化试验
9. 检测条件: 预处理: 125°C烘烤2H, 回流焊1次(参照SMT回流焊说明WI-R00-004文件) 105°C, 老化时间1000H, 老化电流150mA, 测试电流150mA, 积分球2 π 测试, 测试点: 0h, 168h, 336h, 504h, 1000h

Φ (1m) 试验变化图



VF (V) 试验变化图



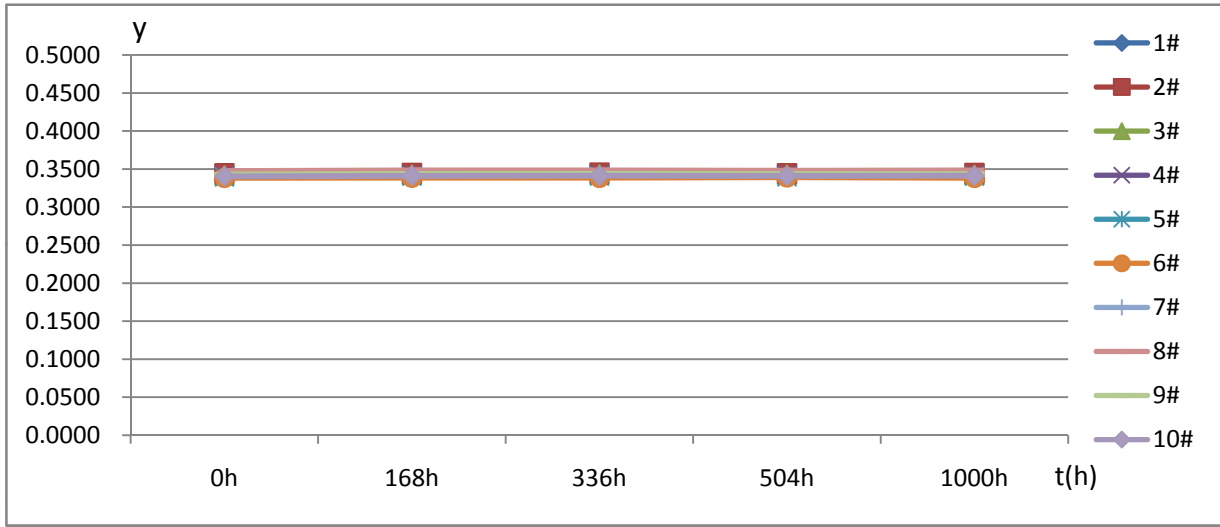
检测: 黄凯 2020. 04. 19

审核: 樊若辉 2020. 04. 19

批准: 张列群 2020. 04. 20

检测报告(内部)

y试验变化图



序号	Φ (1m)					Lumen Maintenance (%)				
	0h	168h	336h	504h	1000h	0h	168h	336h	504h	1000h
1#	68.60	70.30	70.20	69.84	69.59	100.00%	102.48%	102.33%	101.81%	101.44%
2#	67.76	69.33	69.37	68.86	68.82	100.00%	102.32%	102.38%	101.62%	101.56%
3#	67.43	69.05	69.13	68.86	68.58	100.00%	102.40%	102.52%	102.12%	101.71%
4#	67.14	68.59	68.69	68.37	68.20	100.00%	102.16%	102.31%	101.83%	101.58%
5#	66.93	68.63	68.68	68.13	67.95	100.00%	102.54%	102.61%	101.79%	101.52%
6#	66.70	67.95	68.00	67.90	67.23	100.00%	101.87%	101.95%	101.80%	100.79%
7#	67.70	69.38	69.47	69.32	68.88	100.00%	102.48%	102.61%	102.39%	101.74%
8#	67.62	69.31	69.40	69.02	68.80	100.00%	102.50%	102.63%	102.07%	101.75%
9#	66.80	68.66	68.74	68.53	68.16	100.00%	102.78%	102.90%	102.59%	102.04%
10#	67.40	68.77	68.98	68.80	68.34	100.00%	102.03%	102.34%	102.08%	101.39%
Max	68.60	70.30	70.20	69.84	69.59	100.00%	102.78%	102.90%	102.59%	102.04%
Min	66.70	67.95	68.00	67.90	67.23	100.00%	101.87%	101.95%	101.62%	100.79%
Avg	67.41	69.00	69.07	68.76	68.46	100.00%	102.36%	102.46%	102.01%	101.55%

序号	VF (V)					ΔVF (V)			
	0h	168h	336h	504h	1000h	168h	336h	504h	1000h
1#	3.192	3.187	3.189	3.188	3.191	-0.005	-0.003	-0.004	-0.001
2#	3.174	3.168	3.172	3.170	3.175	-0.006	-0.002	-0.004	0.001
3#	3.175	3.169	3.172	3.170	3.175	-0.006	-0.003	-0.005	0.000
4#	3.178	3.174	3.176	3.175	3.179	-0.004	-0.002	-0.003	0.001
5#	3.168	3.166	3.169	3.168	3.171	-0.002	0.001	0.000	0.003
6#	3.170	3.167	3.170	3.168	3.172	-0.003	0.000	-0.002	0.002
7#	3.201	3.195	3.200	3.197	3.202	-0.006	-0.001	-0.004	0.001
8#	3.165	3.162	3.165	3.164	3.167	-0.003	0.000	-0.001	0.002
9#	3.177	3.176	3.179	3.178	3.181	-0.001	0.002	0.001	0.004
10#	3.191	3.185	3.188	3.187	3.188	-0.006	-0.003	-0.004	-0.003

检测报告(内部)

报告编号: LAB0203007-19

第 4 页共 5 页

序号	IF (mA)				
	0h	168h	336h	504h	1000h
1#	150.00	150.00	149.90	149.90	149.90
2#	150.00	149.90	149.90	149.90	149.90
3#	150.00	149.90	149.90	149.90	149.90
4#	150.00	149.90	150.00	149.90	149.90
5#	150.00	149.90	149.90	149.90	149.90
6#	150.00	149.90	149.90	149.90	149.90
7#	149.90	149.90	150.00	149.90	149.90
8#	149.90	149.90	149.90	149.90	149.90
9#	149.90	149.90	150.00	149.90	149.90
10#	150.00	149.90	150.00	149.90	149.90

序号	IR (μA)				
	0h	168h	336h	504h	1000h
1#	0.000	0.000	0.000	0.000	0.000
2#	0.000	0.000	0.000	0.000	0.000
3#	0.000	0.000	0.000	0.000	0.000
4#	0.000	0.000	0.000	0.000	0.000
5#	0.000	0.000	0.000	0.000	0.000
6#	0.000	0.000	0.000	0.000	0.000
7#	0.000	0.000	0.000	0.000	0.000
8#	0.000	0.000	0.000	0.000	0.000
9#	0.000	0.000	0.000	0.000	0.000
10#	0.000	0.000	0.000	0.000	0.000

序号	x					Δx			
	0h	168h	336h	504h	1000h	168h	336h	504h	1000h
1#	0.3272	0.3275	0.3274	0.3271	0.3272	0.0003	0.0002	-0.0001	0.0000
2#	0.3305	0.3305	0.3306	0.3302	0.3303	0.0000	0.0001	-0.0003	-0.0002
3#	0.3282	0.3283	0.3284	0.3282	0.3280	0.0001	0.0002	0.0000	-0.0002
4#	0.3268	0.3269	0.3269	0.3267	0.3266	0.0001	0.0001	-0.0001	-0.0002
5#	0.3271	0.3273	0.3273	0.3266	0.3271	0.0002	0.0002	-0.0005	0.0000
6#	0.3281	0.3280	0.3278	0.3283	0.3276	-0.0001	-0.0003	0.0002	-0.0005
7#	0.3275	0.3276	0.3277	0.3274	0.3274	0.0001	0.0002	-0.0001	-0.0001
8#	0.3314	0.3315	0.3314	0.3311	0.3313	0.0001	0.0000	-0.0003	-0.0001
9#	0.3286	0.3288	0.3288	0.3285	0.3284	0.0002	0.0002	-0.0001	-0.0002
10#	0.3307	0.3308	0.3308	0.3305	0.3306	0.0001	0.0001	-0.0002	-0.0001

检测报告(内部)

报告编号: LAB0203007-19

第 5 页共 5 页

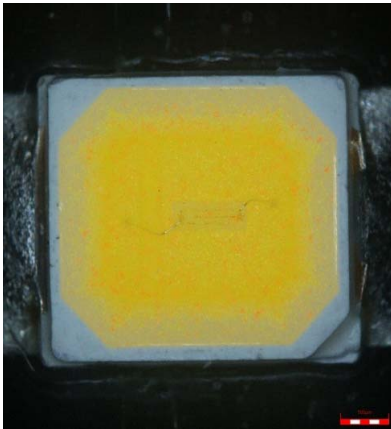
序号	y					Δy			
	0h	168h	336h	504h	1000h	168h	336h	504h	1000h
1#	0.3436	0.3445	0.3447	0.3442	0.3446	0.0009	0.0011	0.0006	0.0010
2#	0.3444	0.3449	0.3452	0.3445	0.3448	0.0005	0.0008	0.0001	0.0004
3#	0.3418	0.3426	0.3430	0.3427	0.3424	0.0008	0.0012	0.0009	0.0006
4#	0.3421	0.3429	0.3429	0.3427	0.3426	0.0008	0.0008	0.0006	0.0005
5#	0.3396	0.3405	0.3405	0.3397	0.3405	0.0009	0.0009	0.0001	0.0009
6#	0.3384	0.3387	0.3386	0.3392	0.3384	0.0003	0.0002	0.0008	0.0000
7#	0.3414	0.3423	0.3426	0.3421	0.3422	0.0009	0.0012	0.0007	0.0008
8#	0.3474	0.3482	0.3482	0.3478	0.3481	0.0008	0.0008	0.0004	0.0007
9#	0.3427	0.3435	0.3437	0.3432	0.3432	0.0008	0.0010	0.0005	0.0005
10#	0.3404	0.3410	0.3413	0.3410	0.3411	0.0006	0.0009	0.0006	0.0007

单颗LED判定基准:

项目	min	max
Lumen Maintenance (%)	90%	110%
ΔVF	-0.5	0.5
Δx	-0.01	0.01
Δy	-0.015	0.015
IR (μA)	/	10

外观无胶裂, 变黄, 发黑等现象

经过1000h高温老化试验, 全部样品各项参数均在判定标准范围内。
外观描述: 全部样品外观正常



试验结果: 合格

备注: 检测结果只对本次样品负责。

.....结束.....